

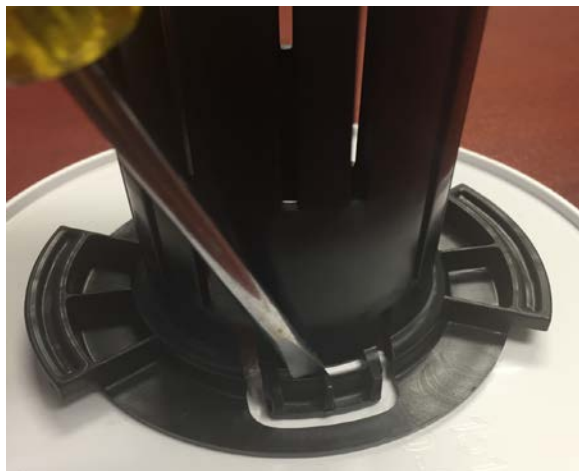
Filter bottom repair plate.

The EZ-lock filter screen is held in place by two small tabs at the bottom of the filter canister. These tabs or the bottom can get damaged by dropping the filter cartridge while the spa is empty. In the event of a broken tab or a cracked bottom, please follow these instructions.

Tools and parts needed:

- | | |
|--|---|
| <ul style="list-style-type: none"> • Flat screwdriver • End-cutting pliers • 100-150 grit sandpaper | <ul style="list-style-type: none"> • Scotch pad, soapy water & towels • Plastic weld repair kit (01512-200) • EZ-Lock filter repair plate (01561-24) |
|--|---|

Please read and understand the instructions before attempting this. Please feel free to contact us if any questions. Once repair is done, let the epoxy dry for at least 2 hours before refilling the spa.



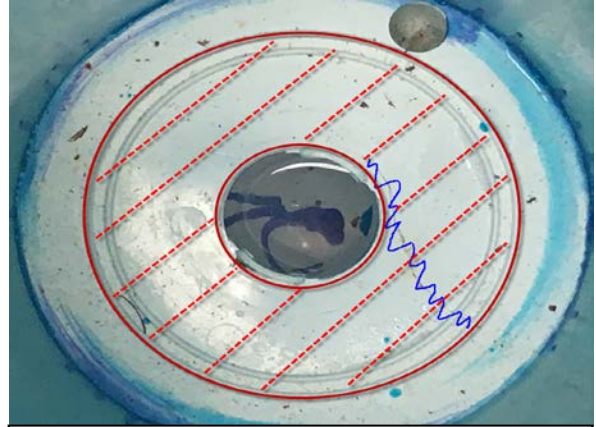
Remove the EZ-lock filter screen by inserting the screwdriver in the clip, pry it towards the outside and lift on that side. Once loose, jiggle the EZ-lock towards the opposite side and lift.



With end-cutting pliers, cut off the tabs, as close as possible to the base.



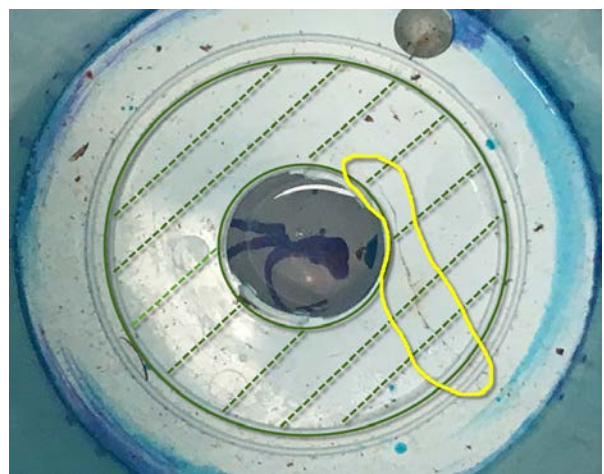
With sandpaper flatten and smooth the remainder tabs.



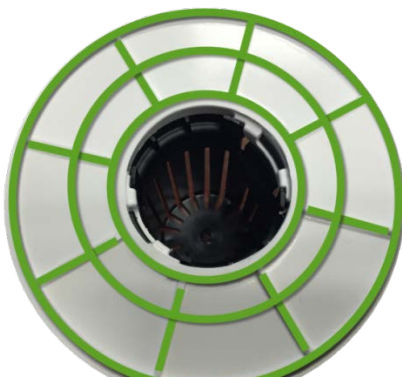
Clean the area in red with the Scotch fiber and soapy water. If there is a crack present, scuff it with the sandpaper for better adhesion. Rinse and dry all the area.



Install the EZ-lock filter screen on to the repair plate.



Apply a coat of epoxy to completely cover the crack (yellow area) followed by a bead over the green line circle and dotted lines.



Apply a bead of epoxy all over the green lines as shown. Act fast to prevent the epoxy from drying/curing.



Align and mount the repair plate on to the filter bottom. Hold in place for about a minute. Finish by adding a large bead all around the plate to for better seal.